

FIRM PROFILE

From our firm's founding by George Acock in 1967, we have sought to combine creative design, functional planning, and sound tectonics in balanced measure to create enduring architecture that is crafted to our clients' needs and vision. We apply this approach equally to every project that we undertake, from private residences, to institutional buildings, to large-scale commercial construction. It has always played a key role in the firm's success.

Our firm's philosophy is evident in the way our staff manages the design and construction process. Design goals are established in the early planning stages as an extension of the vision and functional needs of our clients, and are consciously carried through into the construction documents and construction phase. Similarly, tectonic and structural aspects are considered from the earliest phases, contributing to the integrity of our design solutions. Our associates follow projects from schematic planning through construction, applying our principles at each phase. This multi-faceted approach allows us to consider design relative to market conditions, economics, and other constraints at all phases of design and construction.

We have received dozens of awards and citations from various organizations at the local, regional, and national levels. The firm has worked in twenty states, Mexico, and the Virgin Islands. We have numerous long-term clients, some of whom have worked with us for more than thirty years. Notable clients from Central Ohio include: The Ohio State University, Capital University, Columbus Metropolitan Library, The Limited Stores, and Nationwide Realty Investors.

Today, our firm employs architects, planners, interior designers, and project administrators from a variety of backgrounds, who are committed to comprehensive, creative design and construction. We continually review our completed projects and design process in order to synthesize our philosophy with our experience, keeping our approach to design current and clear. Our organization and philosophy, we feel, is distinctive, and uniquely qualifies us to design and manage projects of varying sizes and complexities.



PLANNING

ARCHITECTURE

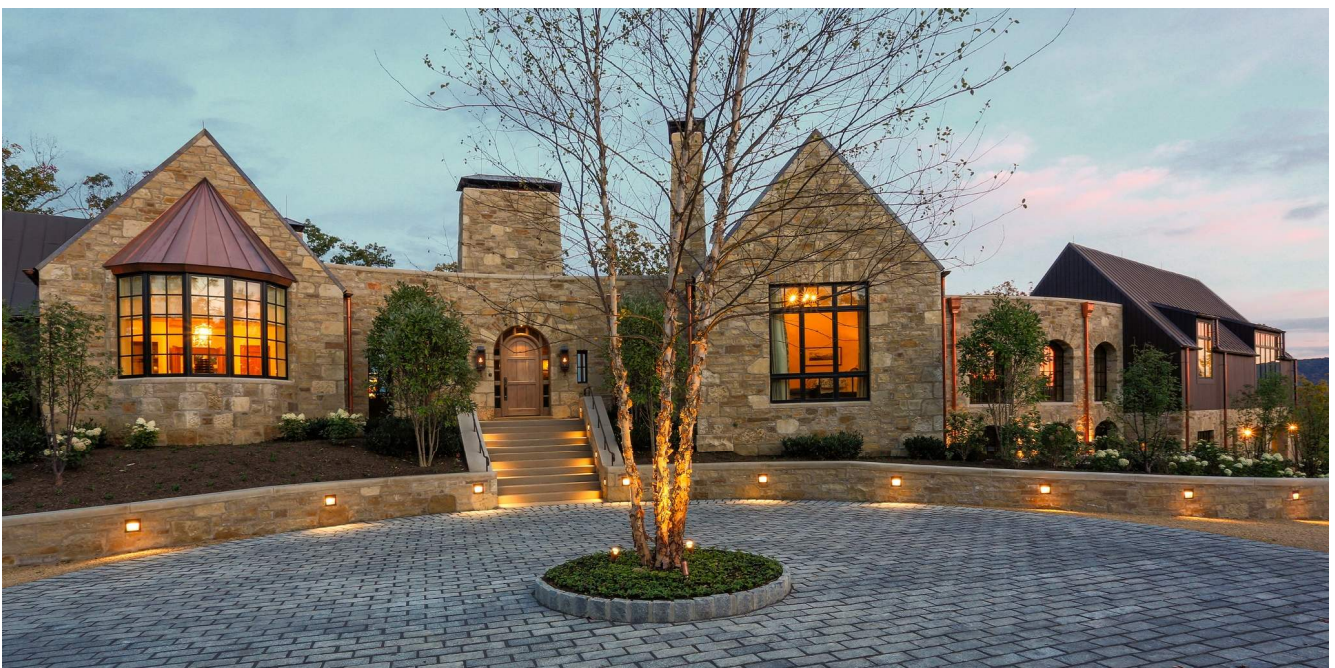
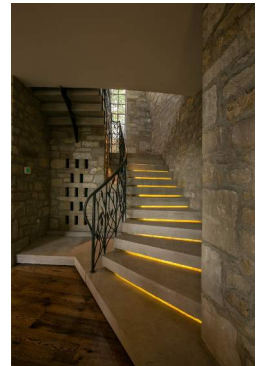
DESIGN

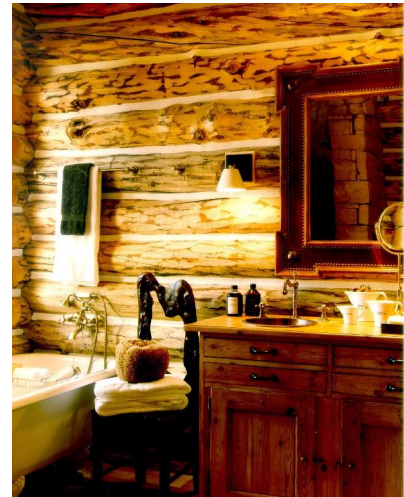


PRIVATE RESIDENCE
GREENBRIER SPORTING CLUB
WEST VIRGINIA

The program was relatively simple, provide a great view to the Greenbrier. That view was conceived as a “magnificent void” between two simple gabled forms. The home’s main public spaces occupy the void while the four master suites and kitchen occupy the stone gables on either side. We worked closely with the local craftsmen and masons during both the design and construction to ensure every detail was thoughtfully designed and expertly executed.

Completed: 2010





**PRIVATE RESIDENCE
DEER VALLEY, UTAH**

The owner wanted to construct a home that reflected its immediate environment and was of a different vernacular than their Columbus residence. The design challenge was to use the pallet of 14" diameter spruce logs and local sandstone and granite to create a refined living space of local materials.

The approach to the house takes visitors down 15 feet creating a private and intimately-scaled auto court and front entrance. Entry into the home brings the visitor in at an elevation of 3 feet above the living room, reinforcing the views through the house and beyond. Unconventional log construction and detailing were used to allow for large, glazed openings that bring much of the breathtaking views into the interior of the home.

Completed: 2001





**PRIVATE RESIDENCE
BEXLEY, OHIO**

9,500 Square foot traditionally detailed custom built home in established community.

Acock Associates Architects was responsible for the design and construction administration for the home.

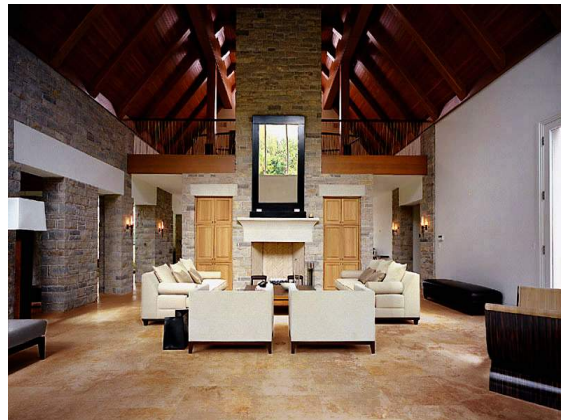
Completed: 2008

PRIVATE RESIDENCE
DELAWARE, OHIO



The traditional farmsteads dotting the countryside South of Delaware served as the inspiration for the River Ridge Residence. Located on the highest ridge of a large, agrarian site, with the existing ponds sculpted to form a scenic canvas, the house was conceived as a collection of buildings, shifted to fit the landscape, and tied together by low walls in a “farmstead,” composition. While forms and materials draw upon the vernacular, spatial relationships and details are contemporary, reflecting the lifestyle of the owners, with bucolic views being included as an integral part of the design.

Completed—2002





**PRIVATE RESIDENCE
NEW ALBANY, OHIO**

6,800 square foot American Georgian Home with a working artist studio. Acock Associates Architects was responsible for the entire design, custom detailing, interior millwork and the construction administration process for the home.

Completed: 2005



PRIVATE RESIDENCE
NEW ALBANY, OHIO

11,000 square foot American
Georgian Home built in Central
Ohio's premier planned com-
munity.

Acock Associates Architects
was responsible for the design
and construction administra-
tion for the home.

Completed: 2002